

Driver installation Guide

Revision: 1.0

November 7, 2011

1.Install the Hottab Driver

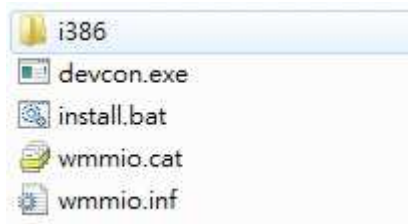
1.1 Installation Files

Please select the driver for the corresponding operating system.



Win7_32bit	Windows 7 x86 Edition
Win7_64bit	Windows 7 x64 Edition
WinXP_32bit	Windows XP x64 Edition

In each directory, it includes following files.

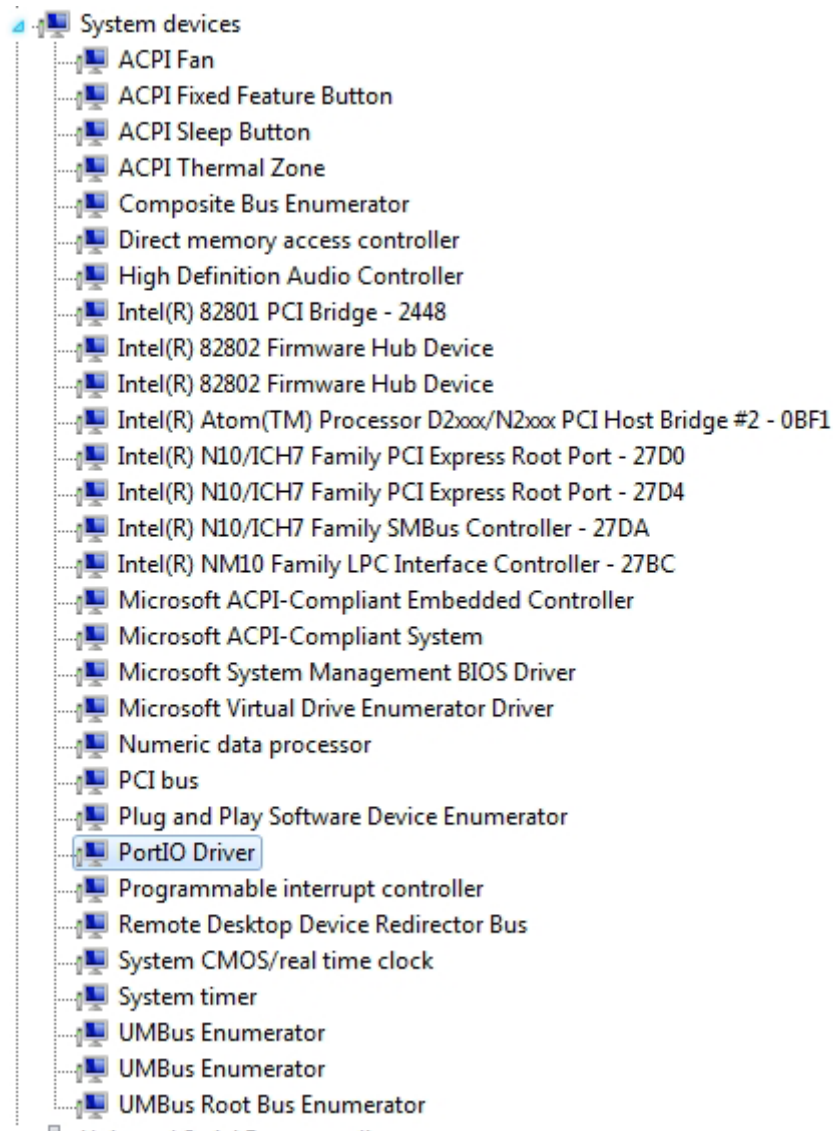


Devcon.exe	Driver application
Install.bat	Driver Installation file
Wmmio.cat	Digital signature file
Wmmio.inf	Driver information file
Wmmio.sys	Hottab Driver

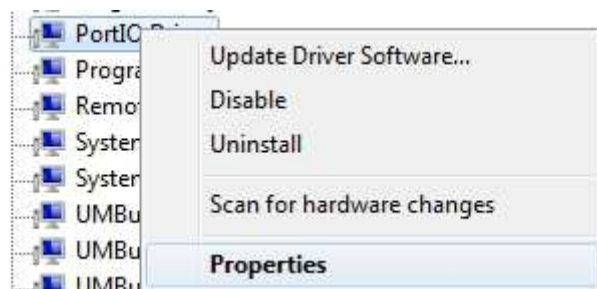
1.2 Installation Procedure

A. Uninstall the old Version.

Before you start to install the new signature Hottab driver, please remove the old Hottab PortIO driver in Windows's Device Manager.



Select **"PortIO Driver"** under System devices and right-click it. Use **Uninstall** selection to remove the driver.





B. Install the driver

Please double click the **install** file to start the installation.

<input type="checkbox"/> Name	Date modified	Type	Size
i386	11/7/2012 11:37 AM	File folder	
devcon	3/24/2005 4:33 PM	Application	56 KB
<input checked="" type="checkbox"/> install	11/1/2012 2:05 PM	Windows Batch File	1 KB
wmmio	11/7/2012 1:05 PM	Security Catalog	9 KB
wmmio	11/7/2012 12:05 PM	Setup Information	2 KB

When Windows Security dialog appear, select **install** to continue the installation.



When the driver is successfully installed, you can see "Drivers Updated successfully" message in the dos prompt.

And "WMMIO" device also added in the Device Manger under "System devices"

